

# CERTIFICATE OF LOCATION OF GOVERNMENT CORNER

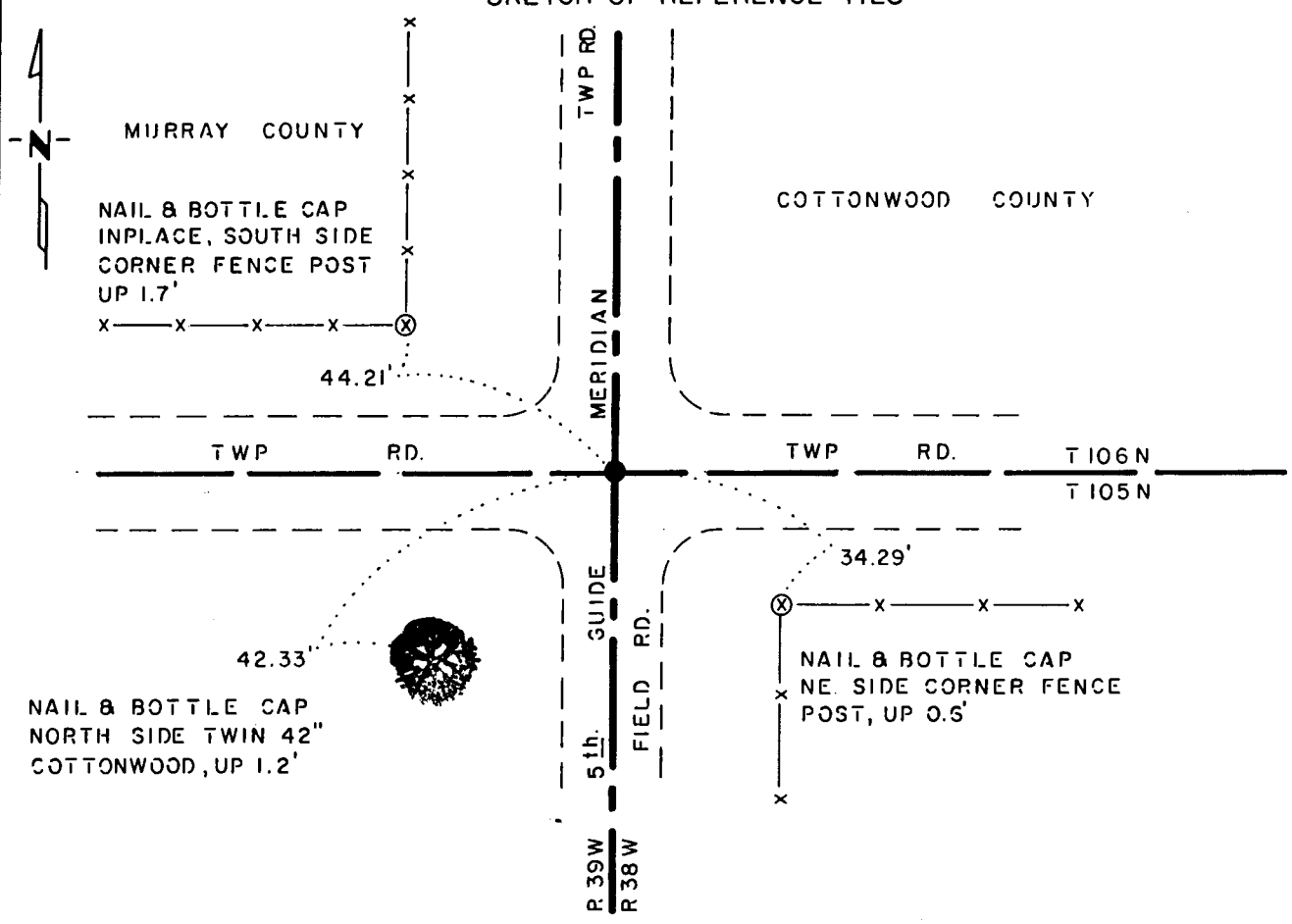
NORTHEAST Corner of Section 1, Township 105 N, Range 39 W, 5<sup>th</sup> P.M.

STATE OF MINNESOTA, County of MURRAY

At the corner location shown on the sketch:

- On 10-8-75 found a CAPPED IRON MONUMENT, DOWN 0.9'  
DATE
- left monument as found,  lowered monument,  removed monument (explain)
- On 10-8-75 placed a 3/8" x 24" IRON ROD INSIDE IRON MONUMENT  
DATE

### SKETCH OF REFERENCE TIES



Statement of evidence relative to this corner location is on back of page.

J. B. M. 3-22-85  
G-158

I hereby certify that this document and the data contained herein was prepared by me or under my direct supervision.

Bruce W. Shepard 12/20/85  
SIGNATURE DATE

Registration No. 17003

- Land Surveyor,  Professional Engineer
- County Surveyor,  County Engineer

### OFFICE OF THE COUNTY RECORDER

County of \_\_\_\_\_

I hereby certify that this document was filed in the Co. Recorders office at \_\_\_\_\_ .M. on the \_\_\_\_\_ day of \_\_\_\_\_ A.D., 19 \_\_\_\_\_

County Recorder \_\_\_\_\_

By \_\_\_\_\_, Deputy

DOCUMENT NO. \_\_\_\_\_